



# **Planning and Transportation Committee**

## **PRESENTATION**

**Date: TUESDAY, 5 NOVEMBER 2019**

**Time: 10.30 am**

**Venue: LIVERY HALL - GUILDHALL**

**Any drawings and details of materials submitted for approval will be available for inspection by Members in the Livery Hall from Approximately 9:30 a.m.**

**John Barradell  
Town Clerk and Chief Executive**

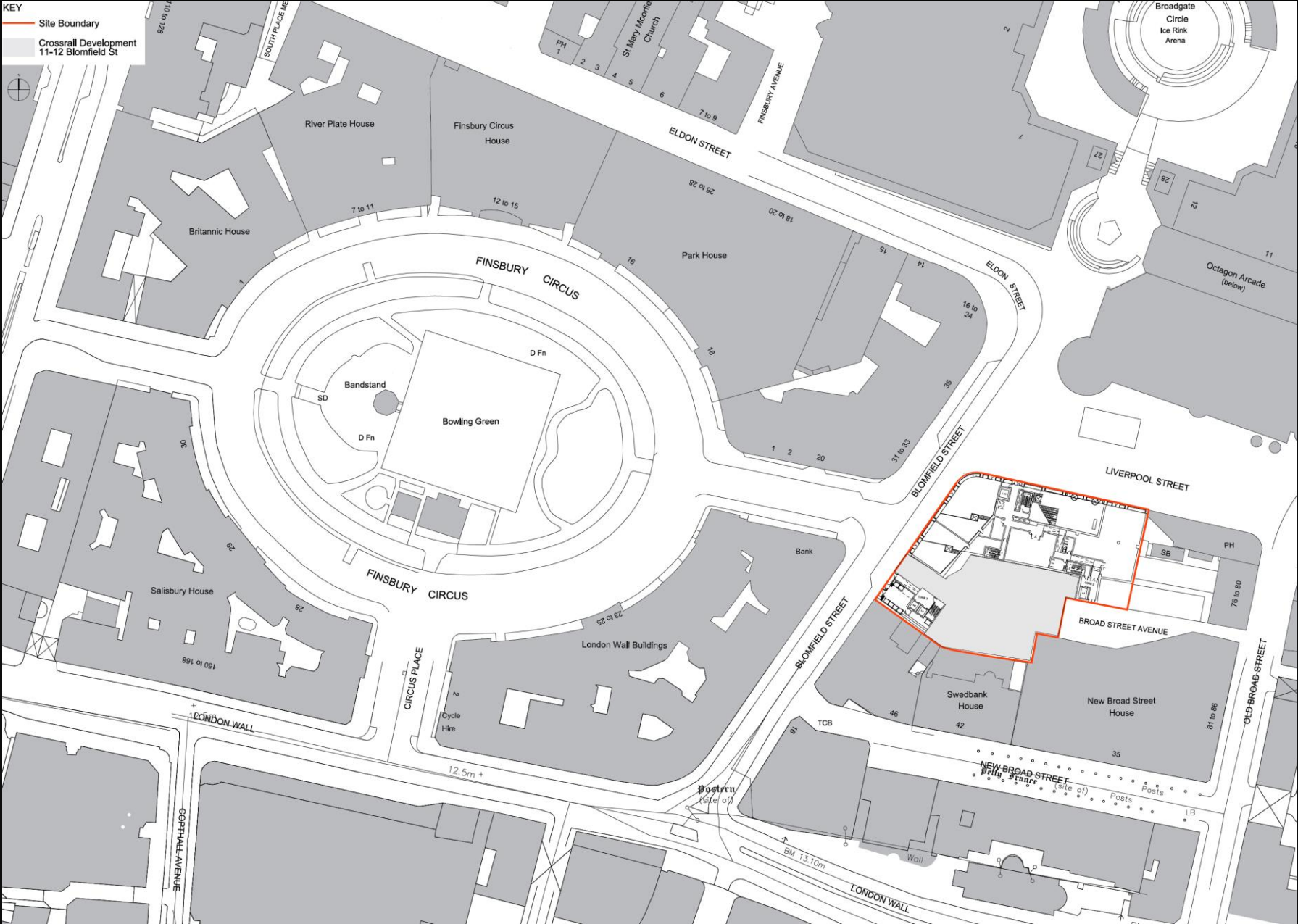
This page is intentionally left blank

# PLANNING & TRANSPORTATION COMMITTEE

5 November 2019



# 1-14 Liverpool Street and 11-12 Blomfield Street

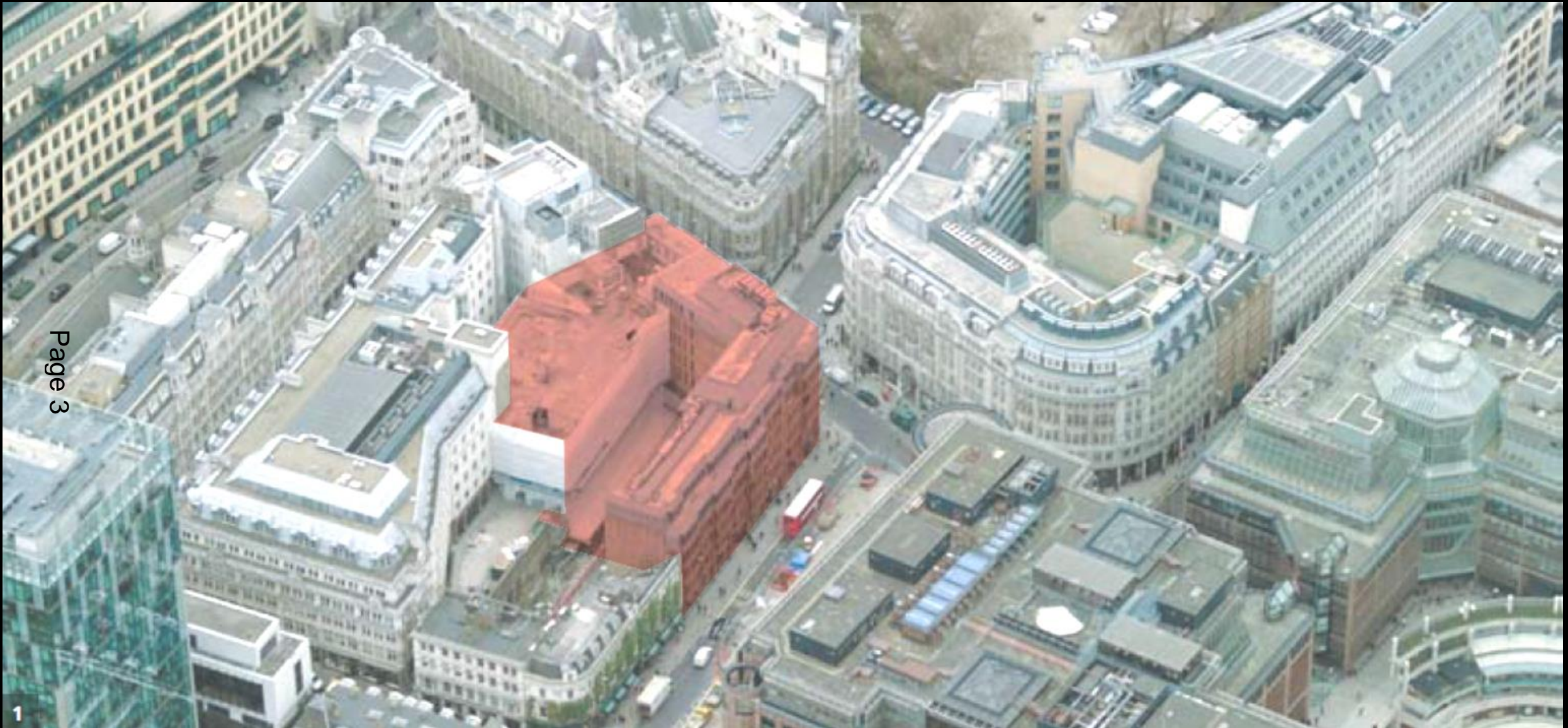


Site location plan



# 1-14 Liverpool Street and 11-12 Blomfield Street

Page 3



1

Aerial View



# 1-14 Liverpool Street and 11-12 Blomfield Street



Site Photograph (looking south)



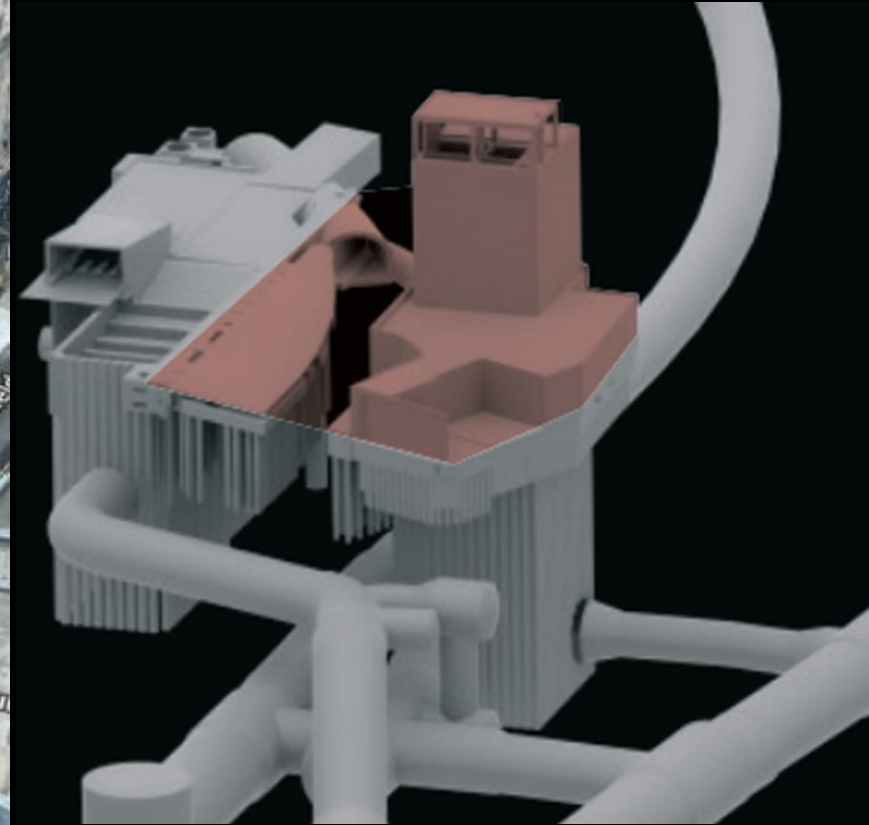
# 1-14 Liverpool Street and 11-12 Blomfield Street



The site : Looking east



# 1-14 Liverpool Street and 11-12 Blomfield Street



The site : Aerial view looking south



# 1-14 Liverpool Street and 11-12 Blomfield Street

A1

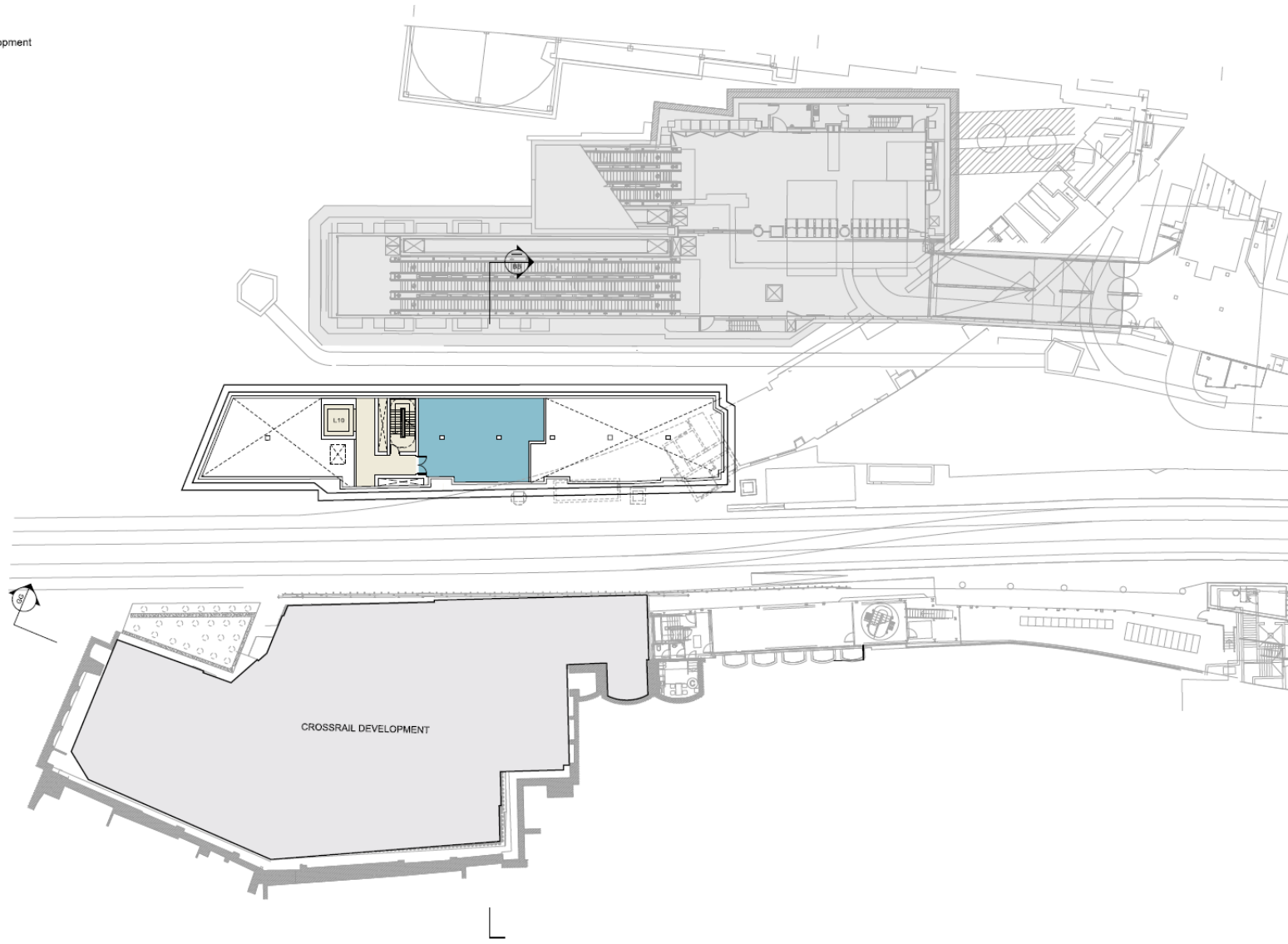
1. The drawings are for the proposed development and are not to be used for any other purpose.  
2. The drawings are for the proposed development and are not to be used for any other purpose.  
3. The drawings are for the proposed development and are not to be used for any other purpose.

KEY

Crossrail Development

Plant

Circulation



B2 - Mezzanine

Basement -2 Mezzanine plan

# 1-14 Liverpool Street and 11-12 Blomfield Street

A1

This drawing is a technical drawing of the proposed development and is not a site plan. It is a technical drawing of the proposed development and is not a site plan. It is a technical drawing of the proposed development and is not a site plan.

## KEY

Crossrail Development

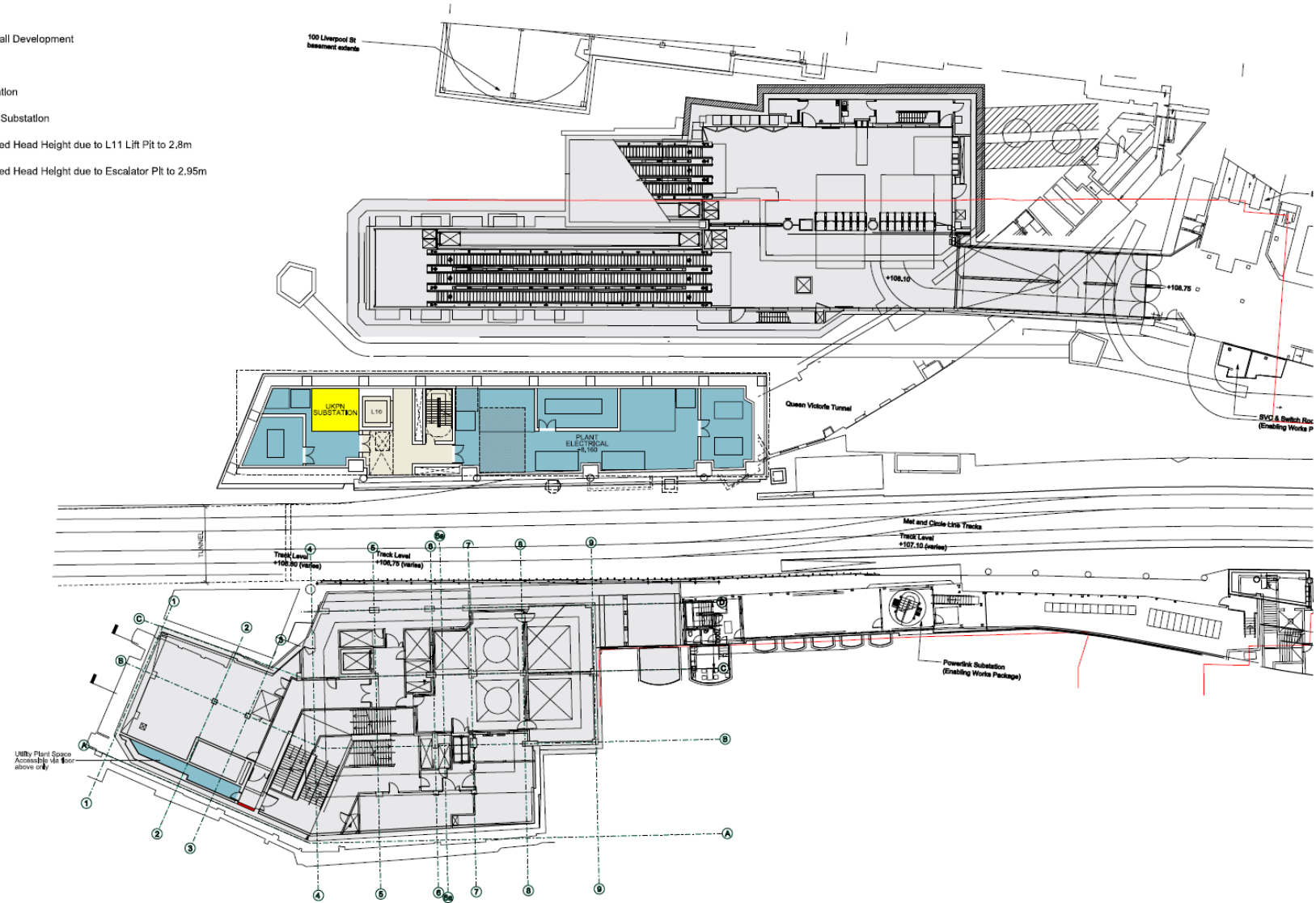
Plant

Circulation

UKPN Substation

Reduced Head Height due to L11 Lift Pit to 2.8m

Reduced Head Height due to Escalator Pit to 2.95m



B1

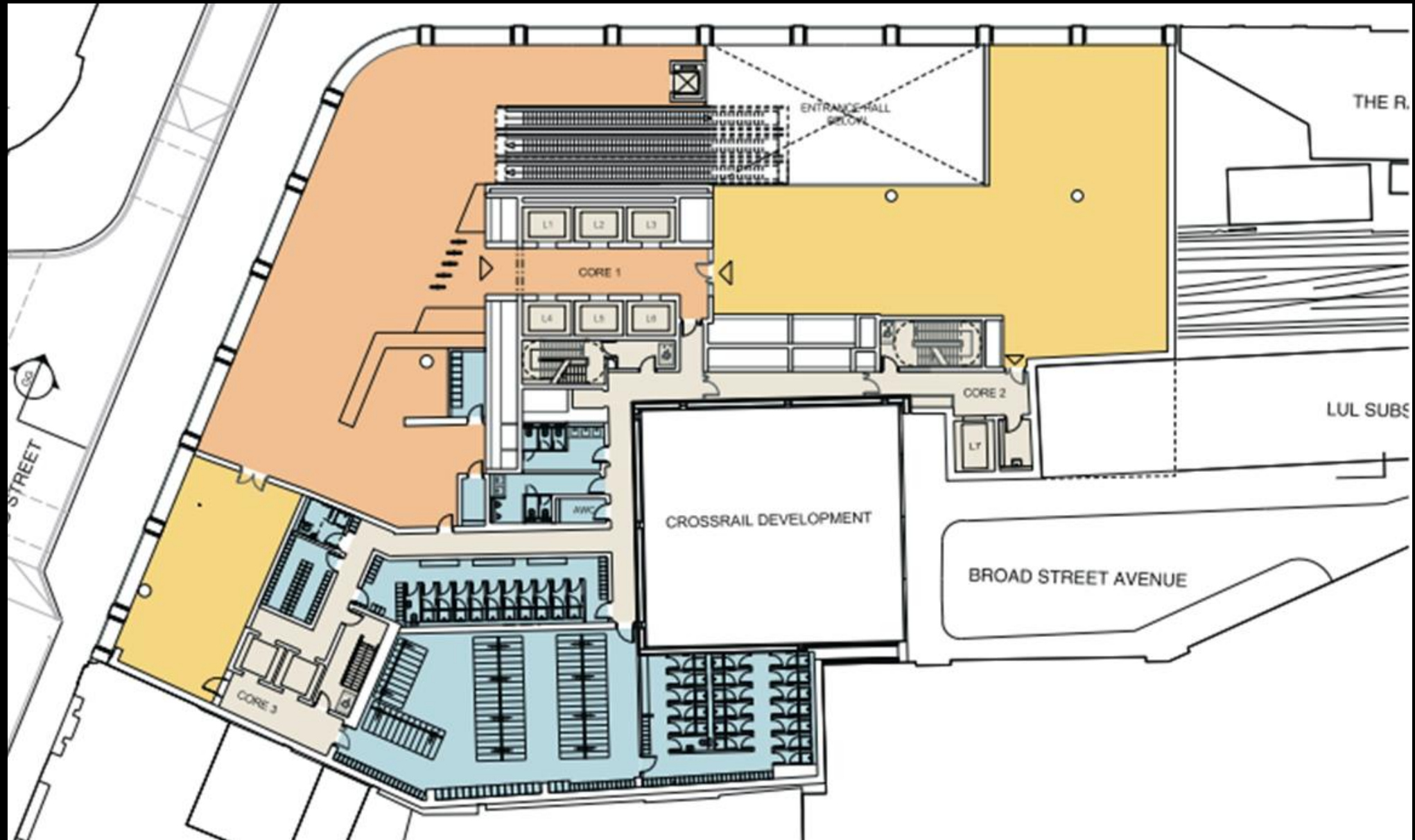
Basement -1 plan



## A1



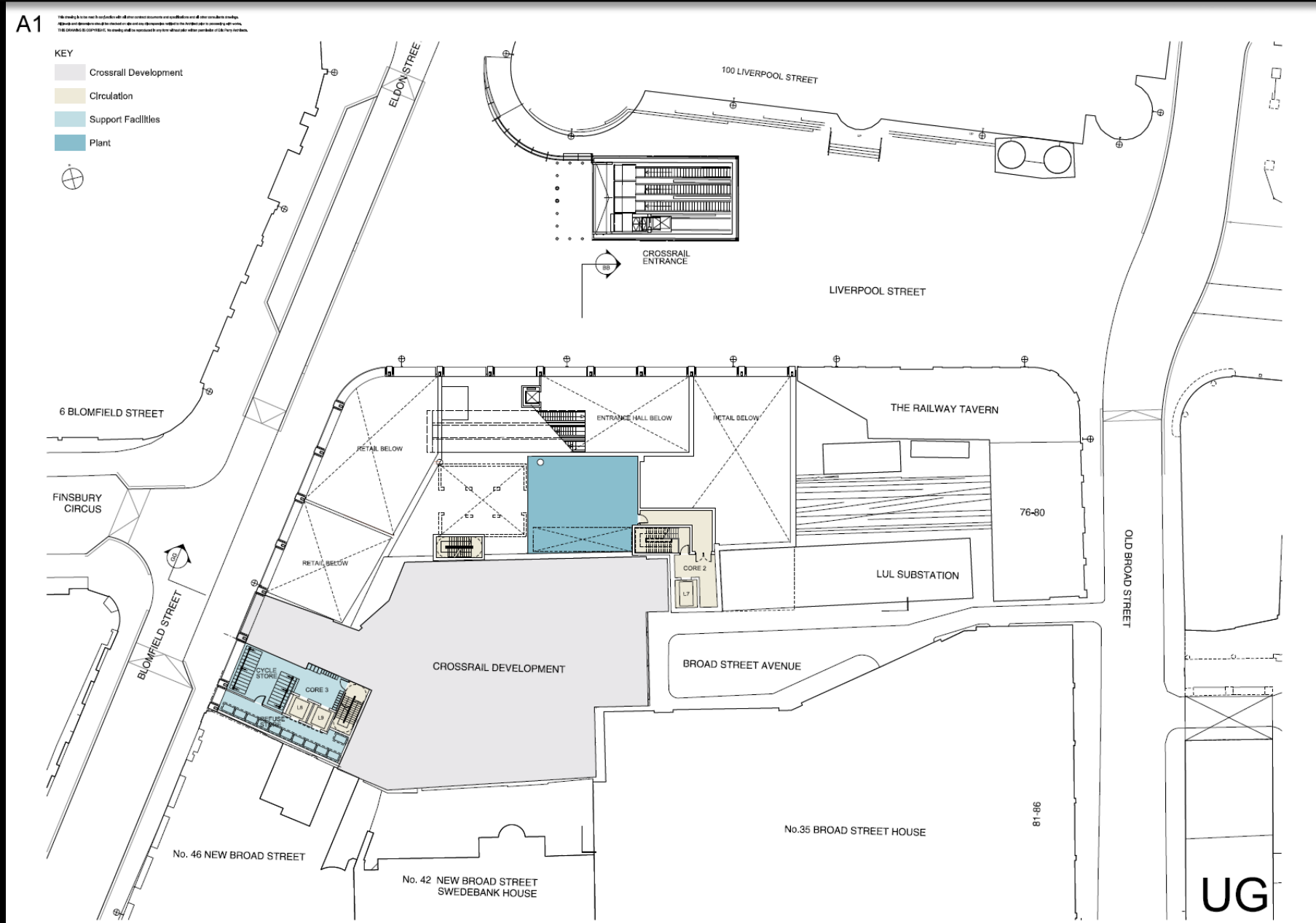
# 1-14 Liverpool Street and 11-12 Blomfield Street



Ground floor plan

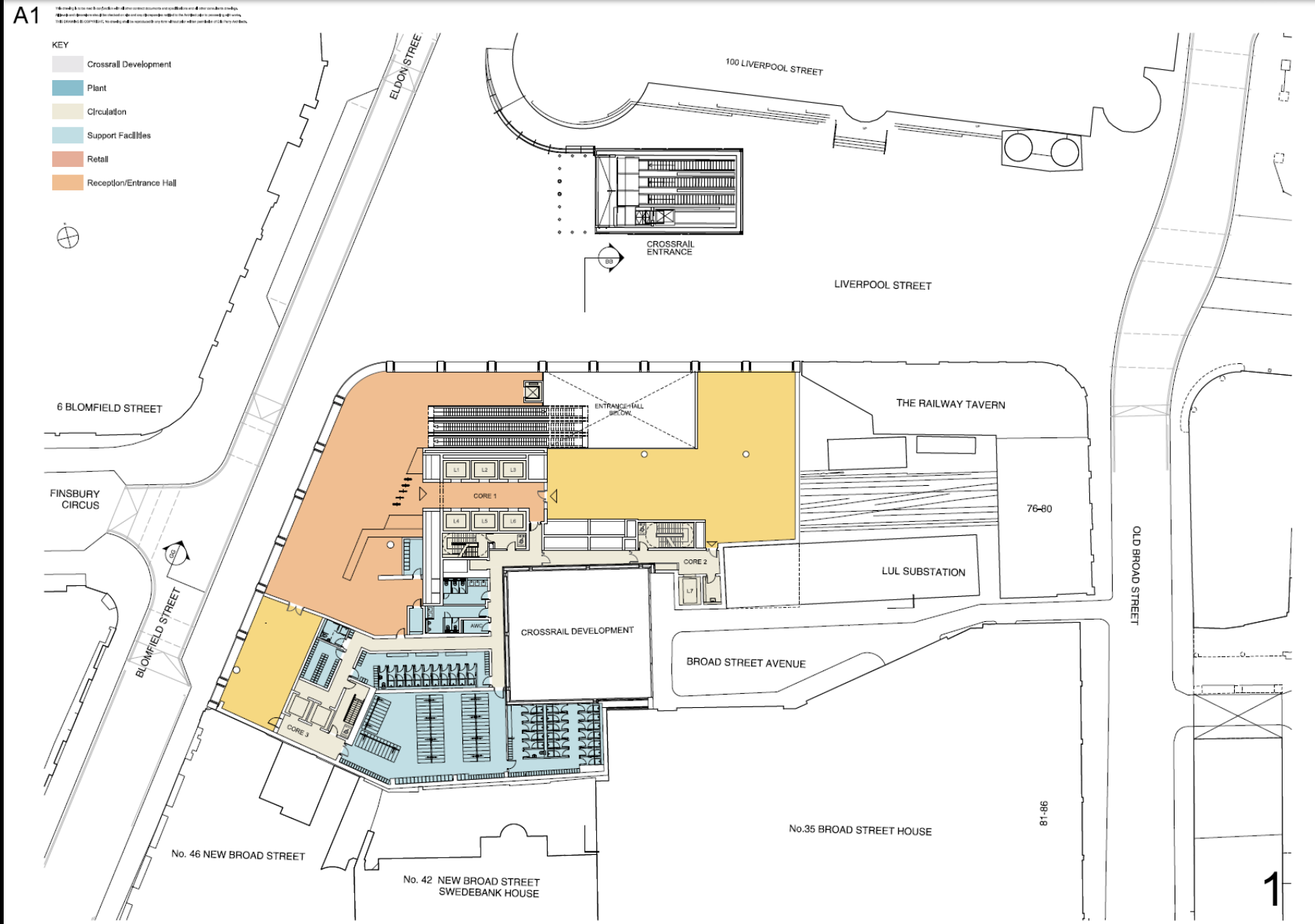


# 1-14 Liverpool Street and 11-12 Blomfield Street



Upper ground floor plan

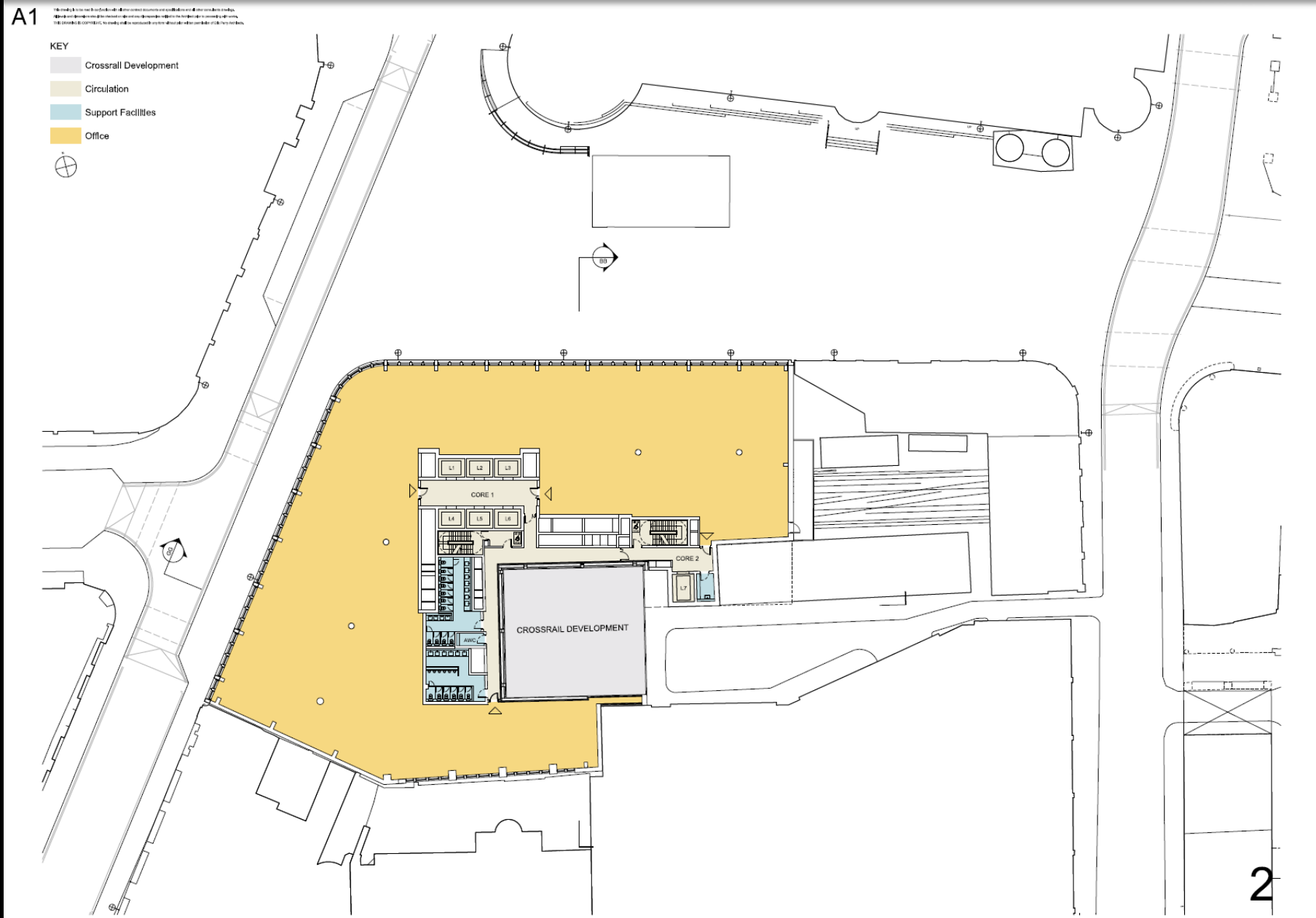
# 1-14 Liverpool Street and 11-12 Blomfield Street



First floor plan

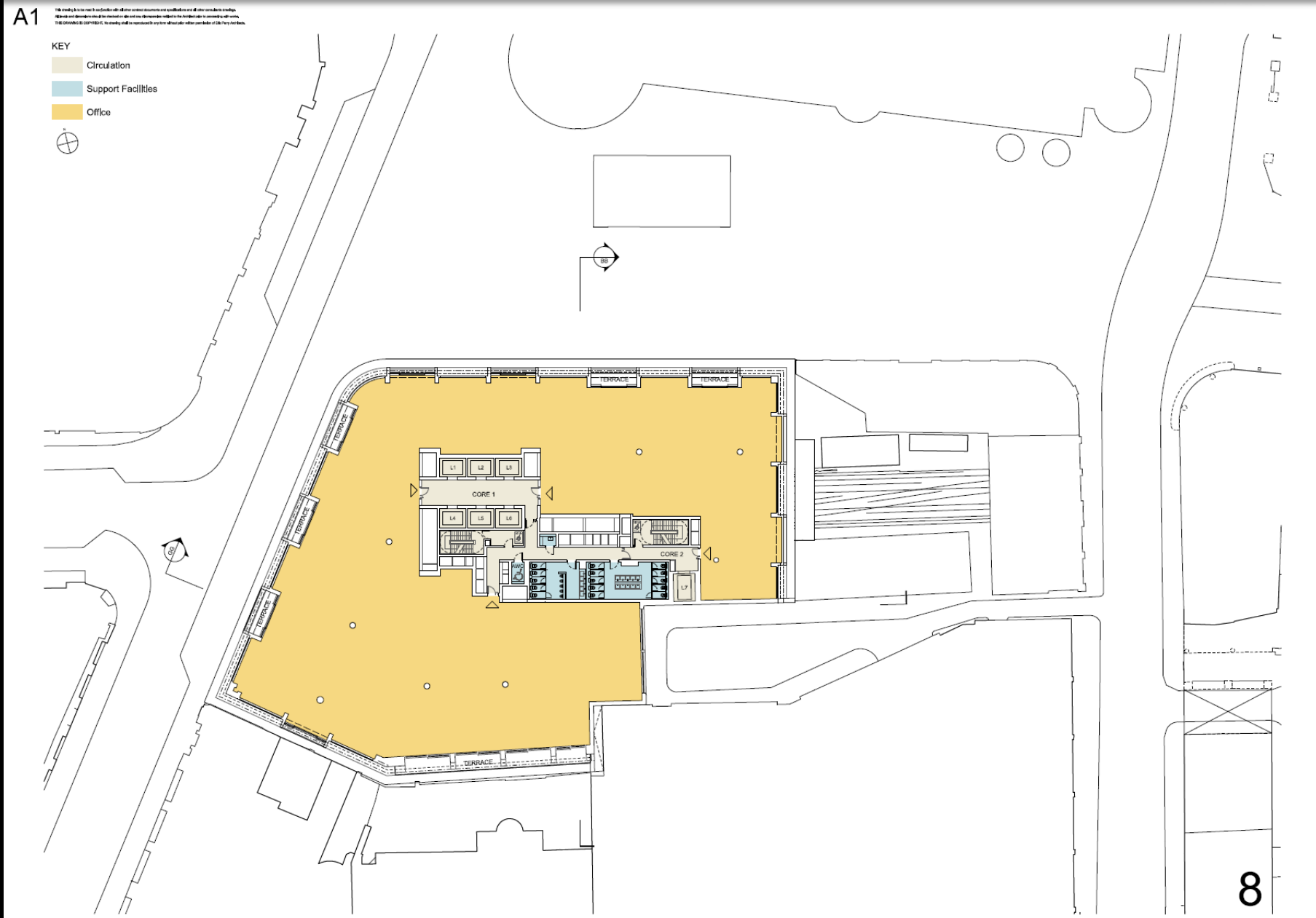


# 1-14 Liverpool Street and 11-12 Blomfield Street



Second floor plan

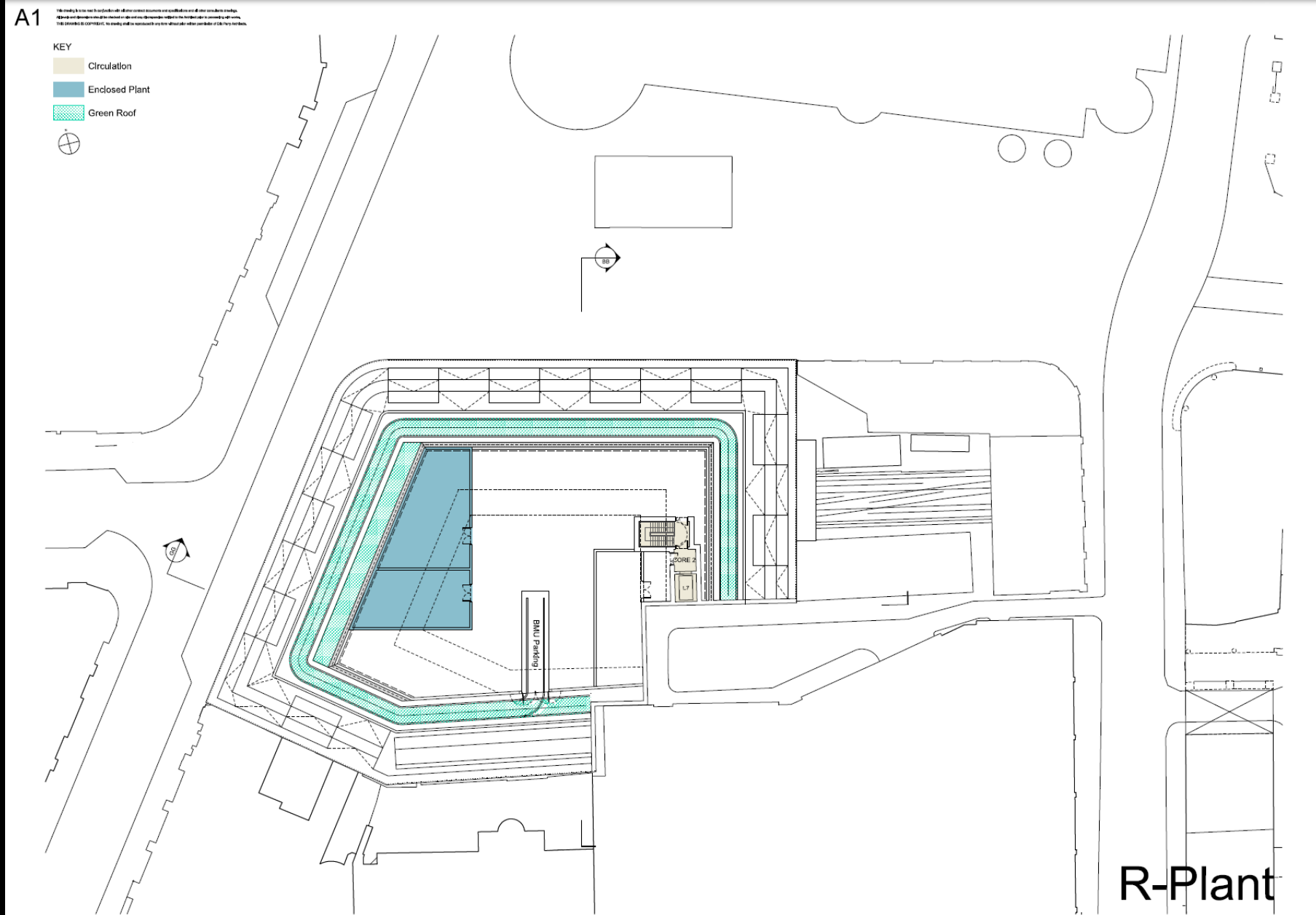
# 1-14 Liverpool Street and 11-12 Blomfield Street



Eighth floor plan



# 1-14 Liverpool Street and 11-12 Blomfield Street



Roof plant floor plan

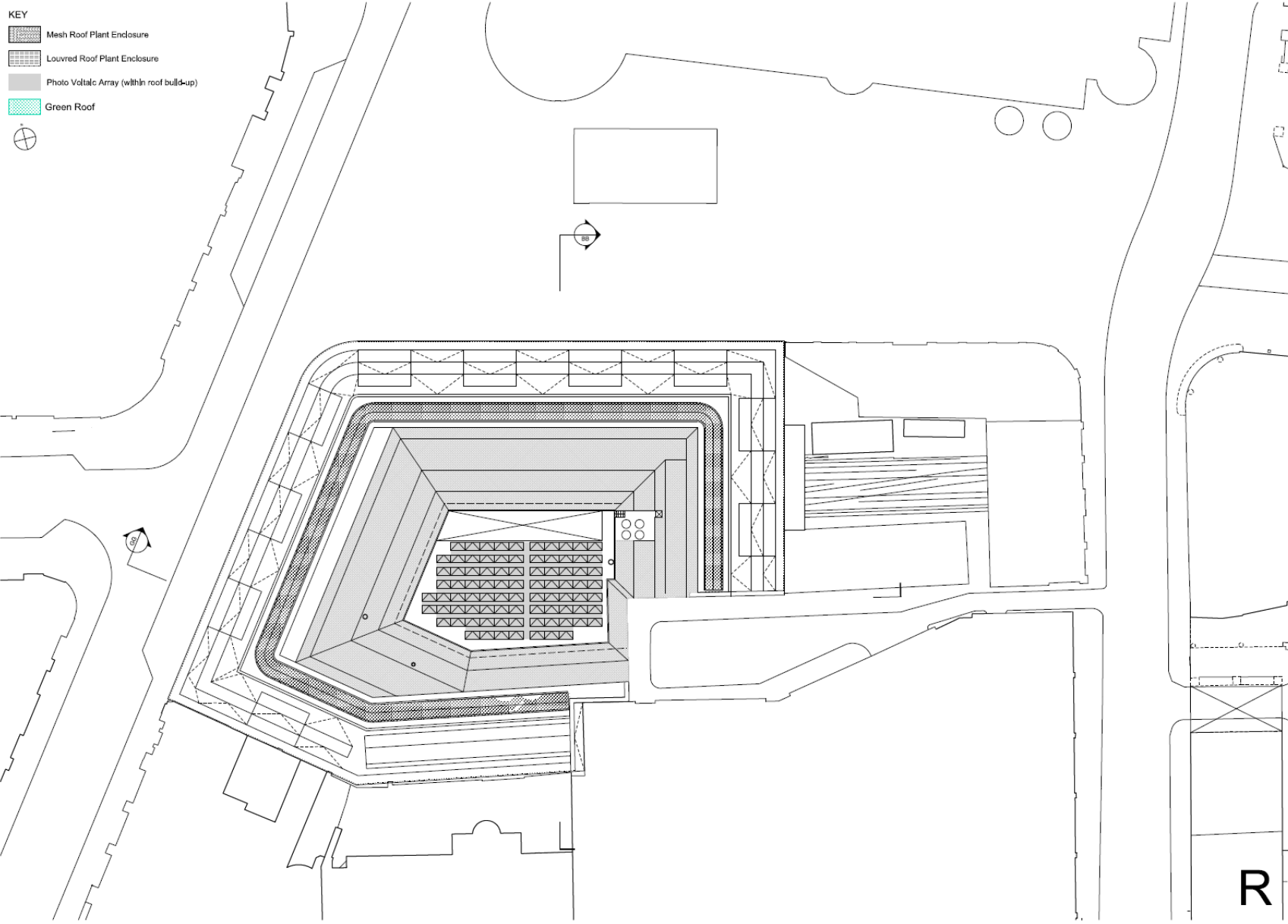
# 1-14 Liverpool Street and 11-12 Blomfield Street

A1

This drawing is for information only and does not constitute a contract. It is subject to change without notice. All dimensions are approximate and should be verified on site. THE DRAWING IS COPYRIGHT © 2014 BY THE ARCHITECT. ALL RIGHTS RESERVED.

## KEY

- Mesh Roof Plant Enclosure
- Louvered Roof Plant Enclosure
- Photo Voltaic Array (within roof build-up)
- Green Roof



Roof plan

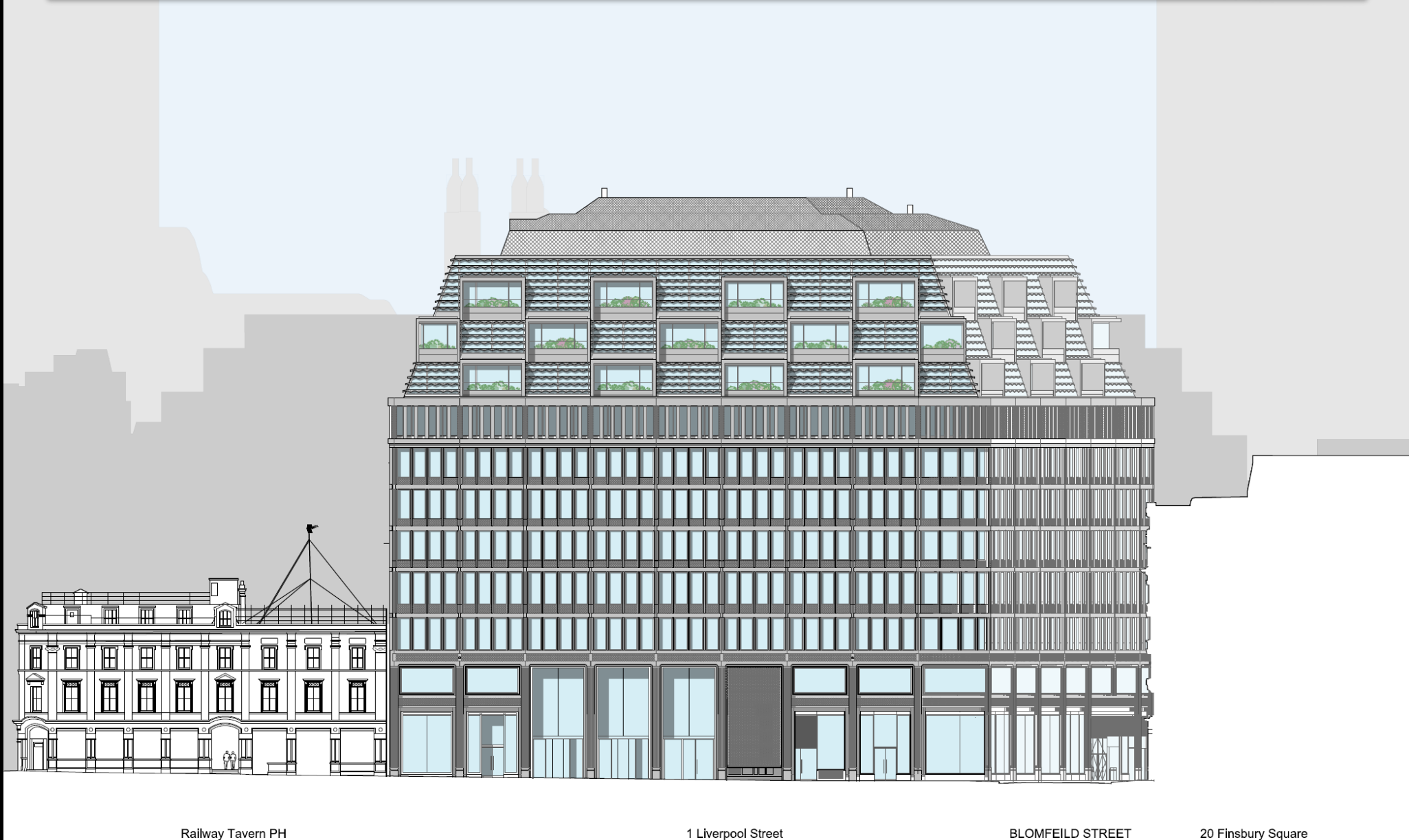


# 1-14 Liverpool Street and 11-12 Blomfield Street



Existing north elevation

# 1-14 Liverpool Street and 11-12 Blomfield Street



Proposed north elevation



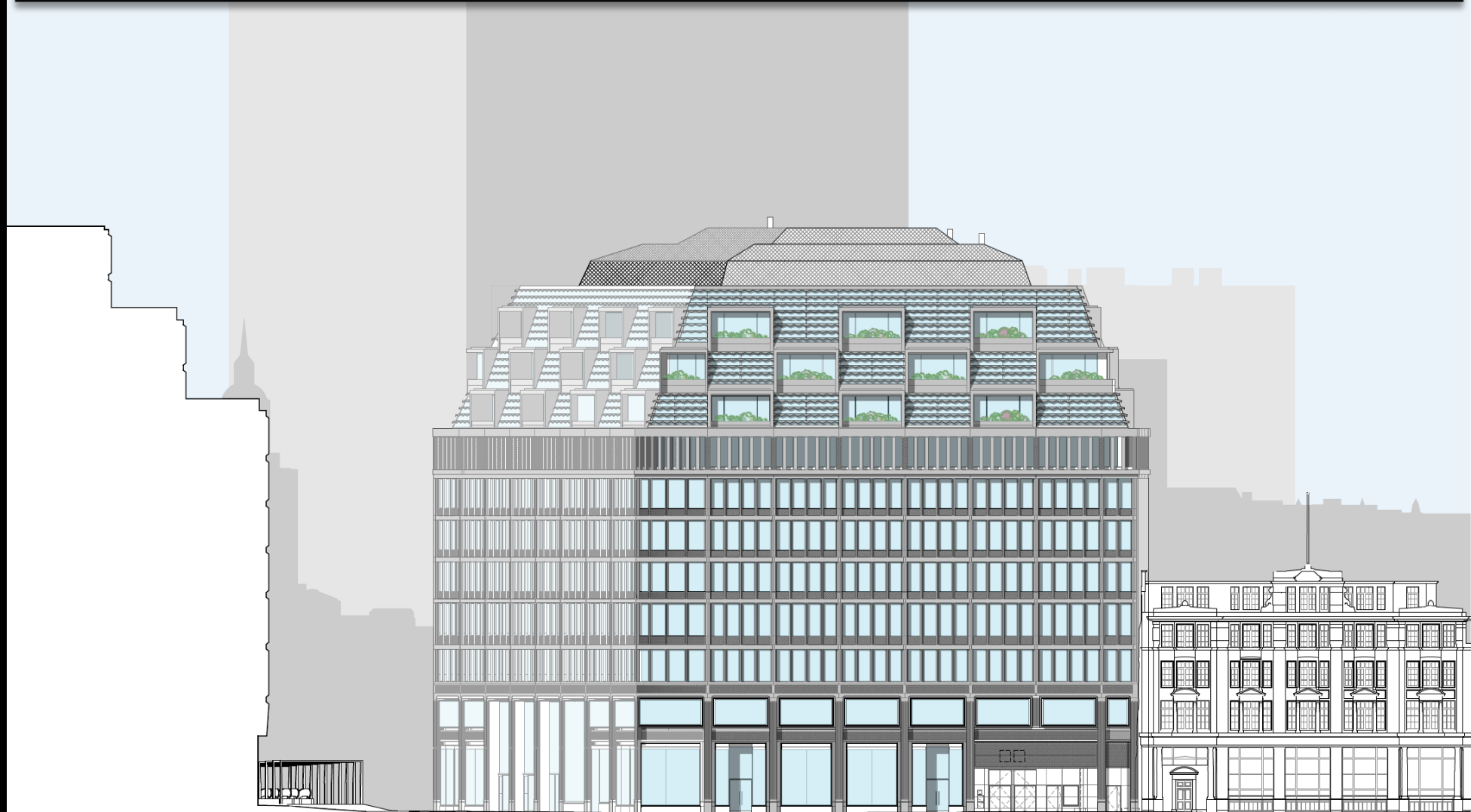
# 1-14 Liverpool Street and 11-12 Blomfield Street

Page 19



Existing west elevation

# 1-14 Liverpool Street and 11-12 Blomfield Street



100 Liverpool St

LIVERPOOL STREET

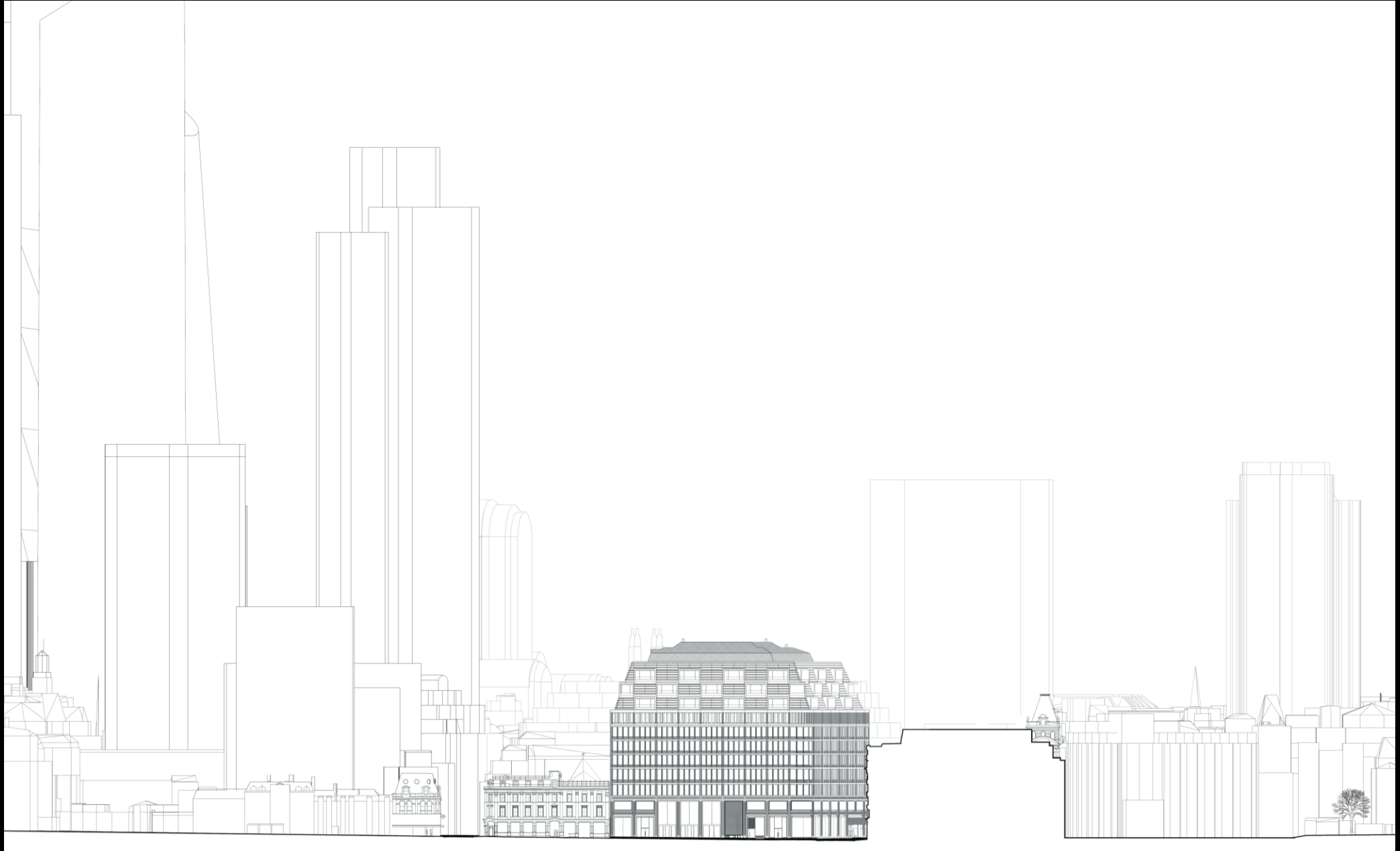
1 Liverpool St

46-47 Blomfield St

Proposed west elevation

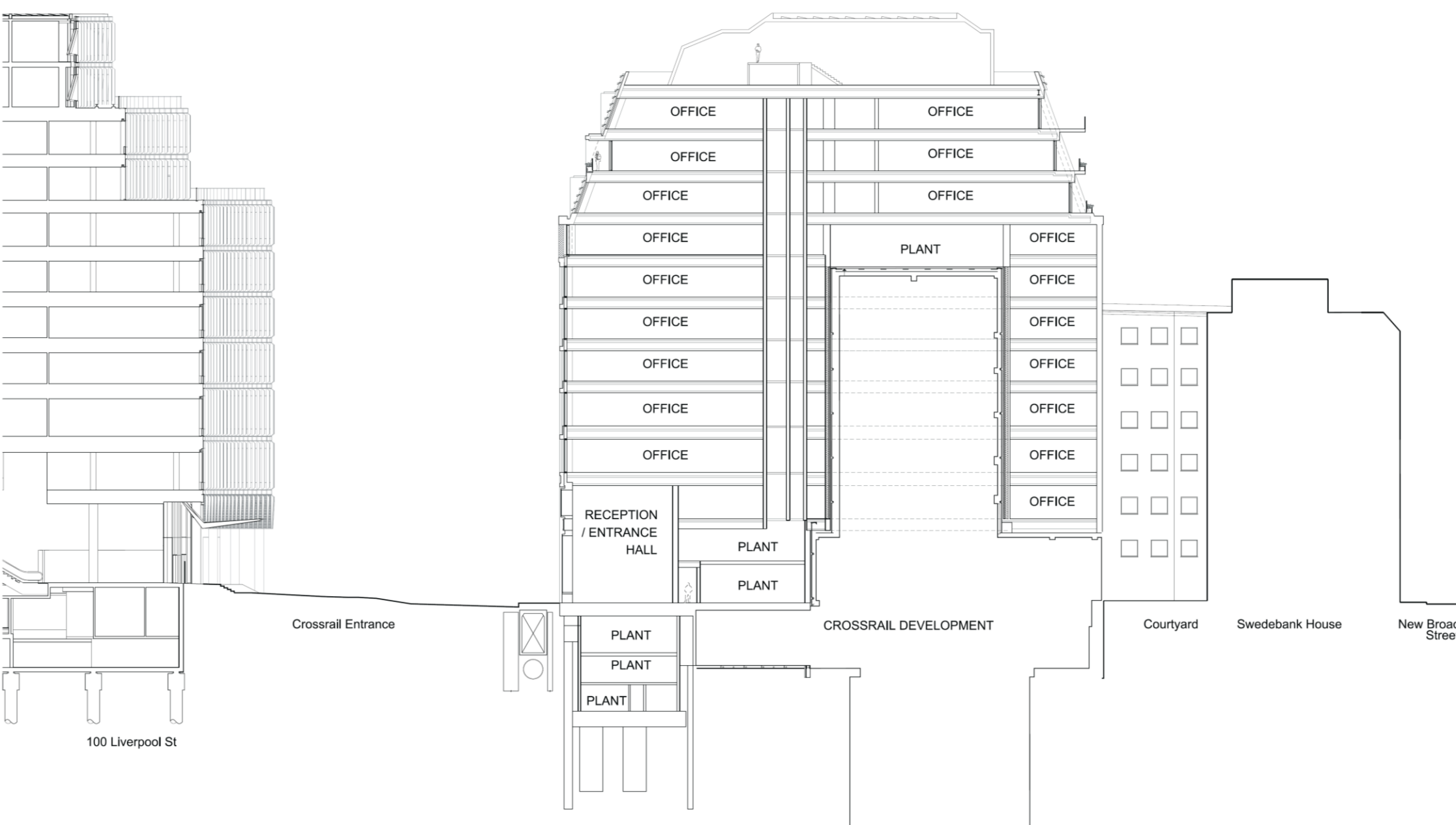


# 1-14 Liverpool Street and 11-12 Blomfield Street



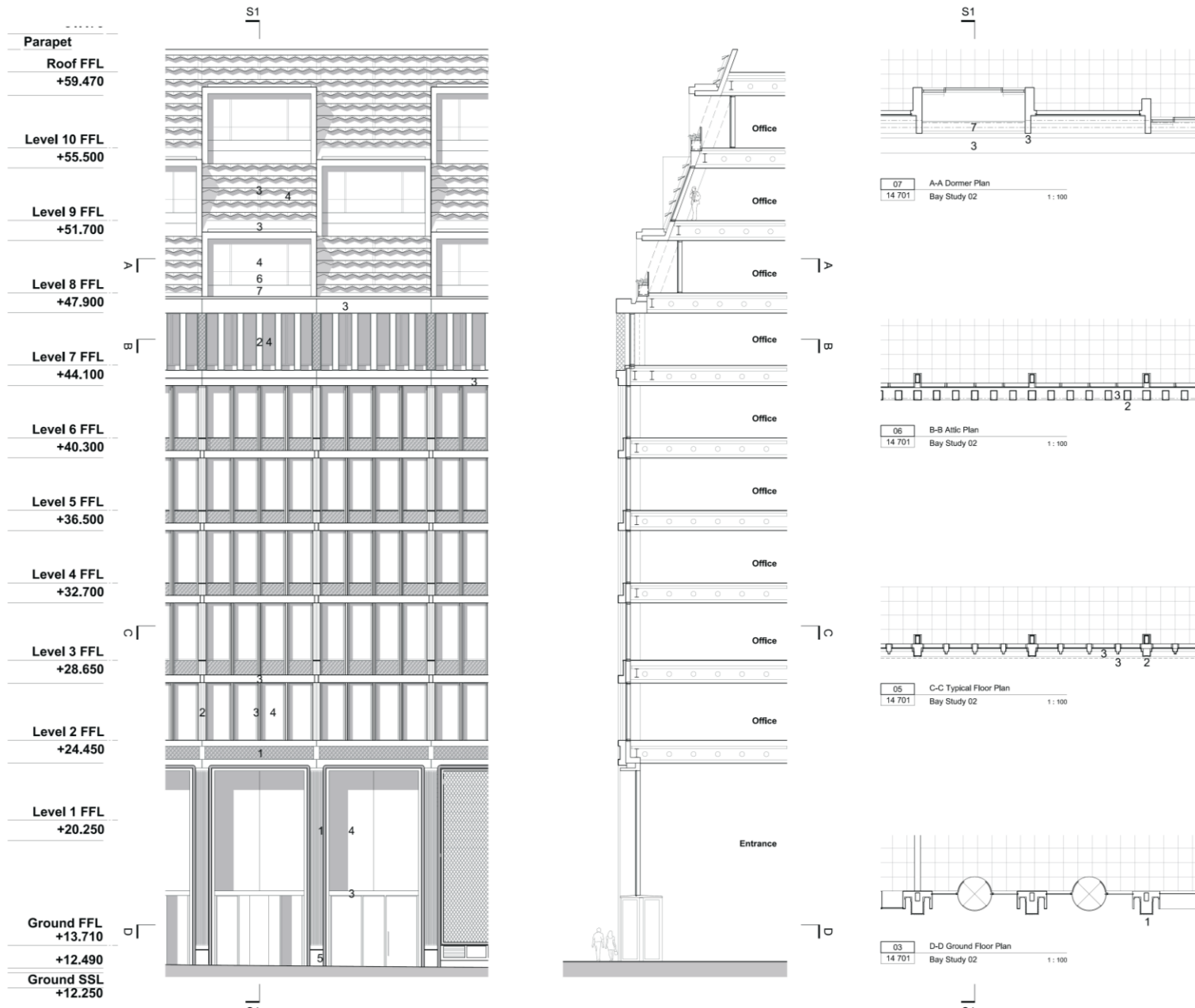
Proposed north elevation - Context

1-14 Liverpool Street and 11-12 Blomfield Street



Proposed section BB

# 1-14 Liverpool Street and 11-12 Blomfield Street



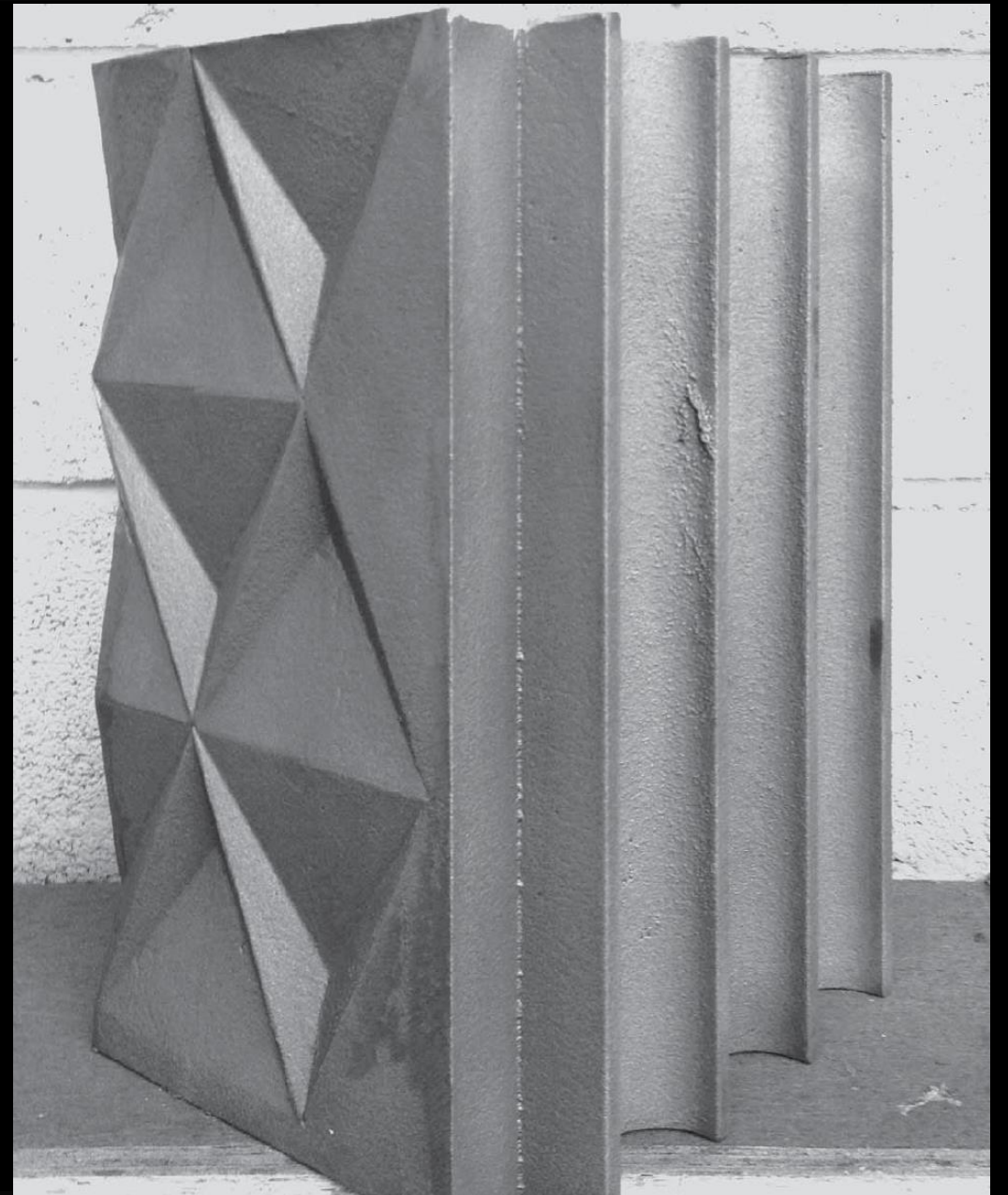
Bay study 02



# 1-14 Liverpool Street and 11-12 Blomfield Street



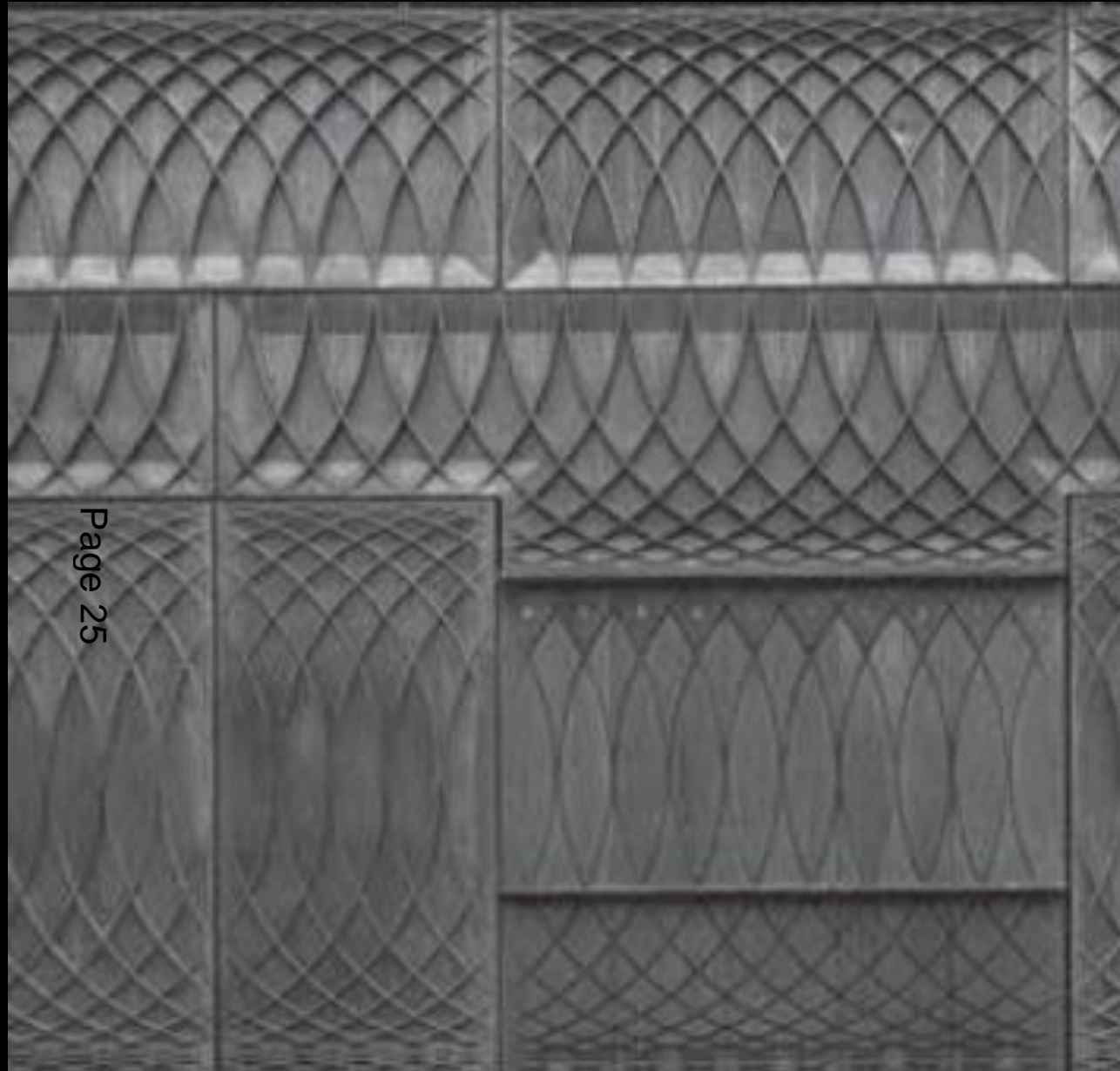
Page 24



Cast metal

# 1-14 Liverpool Street and 11-12 Blomfield Street

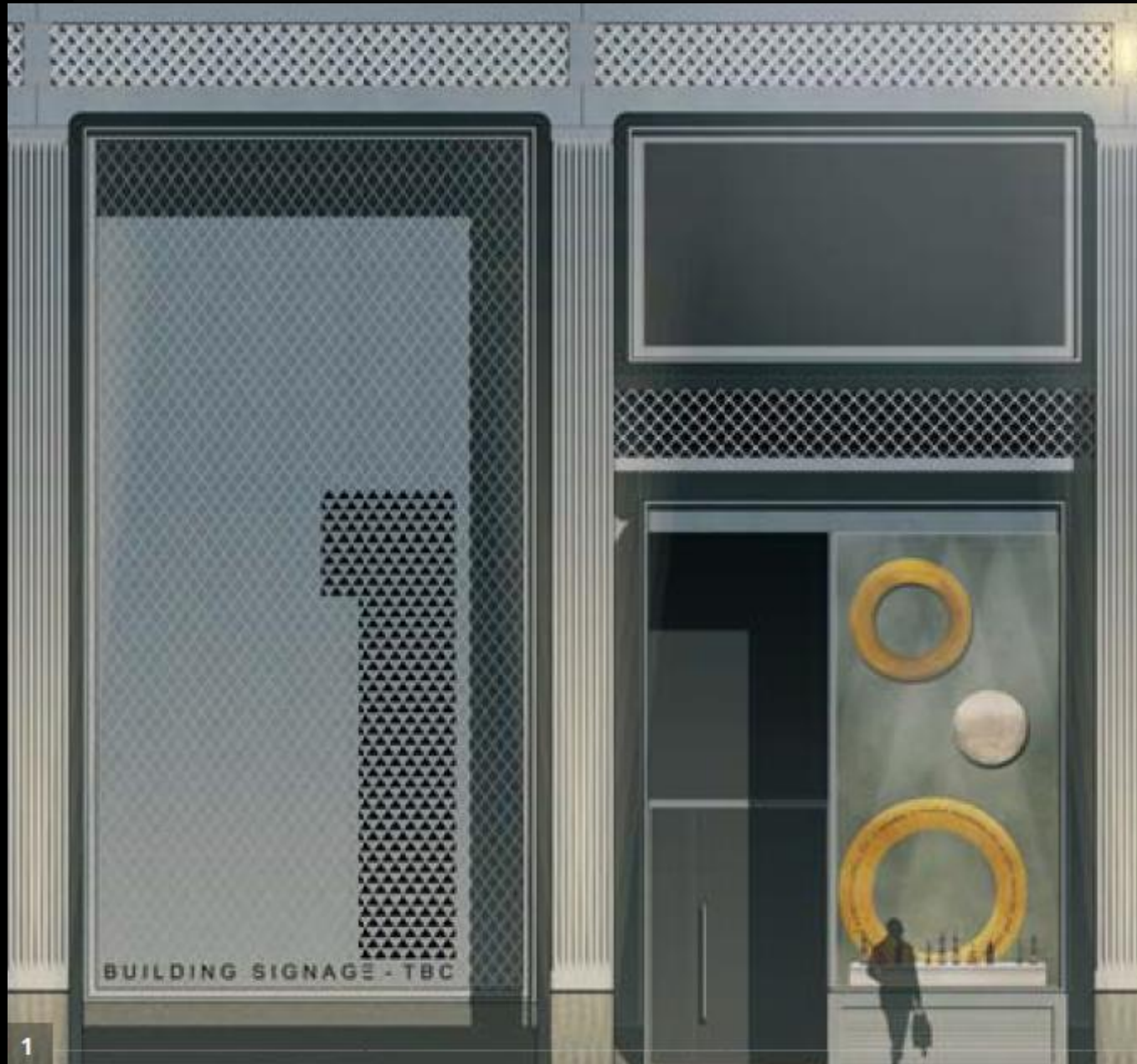
Page 25



Cast metal



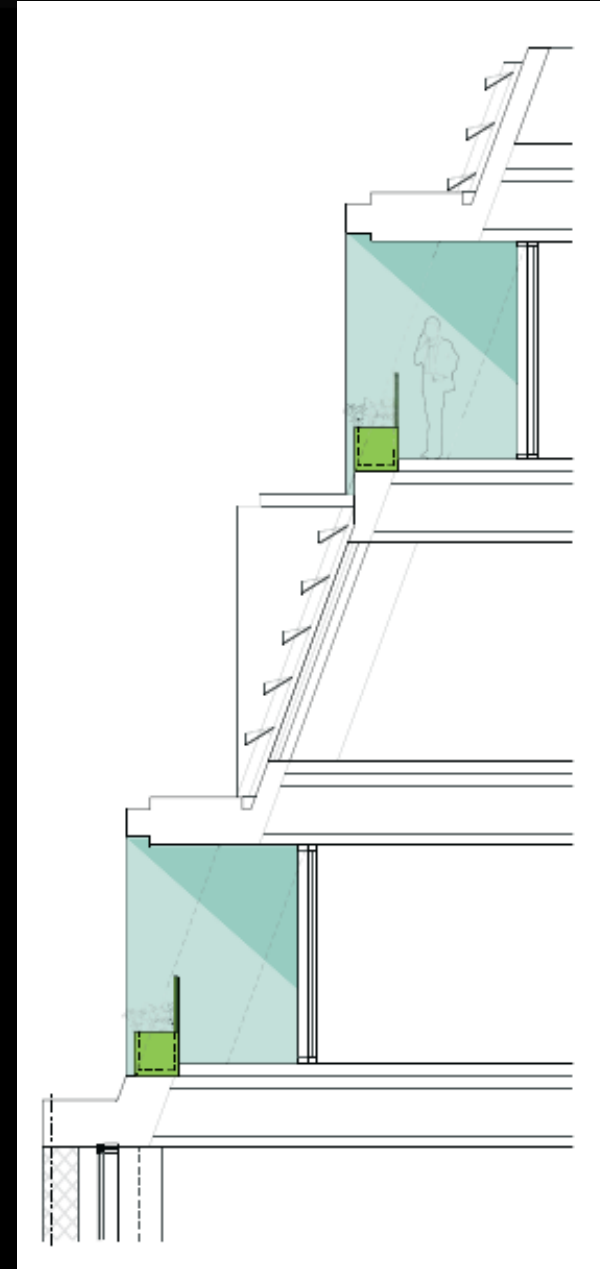
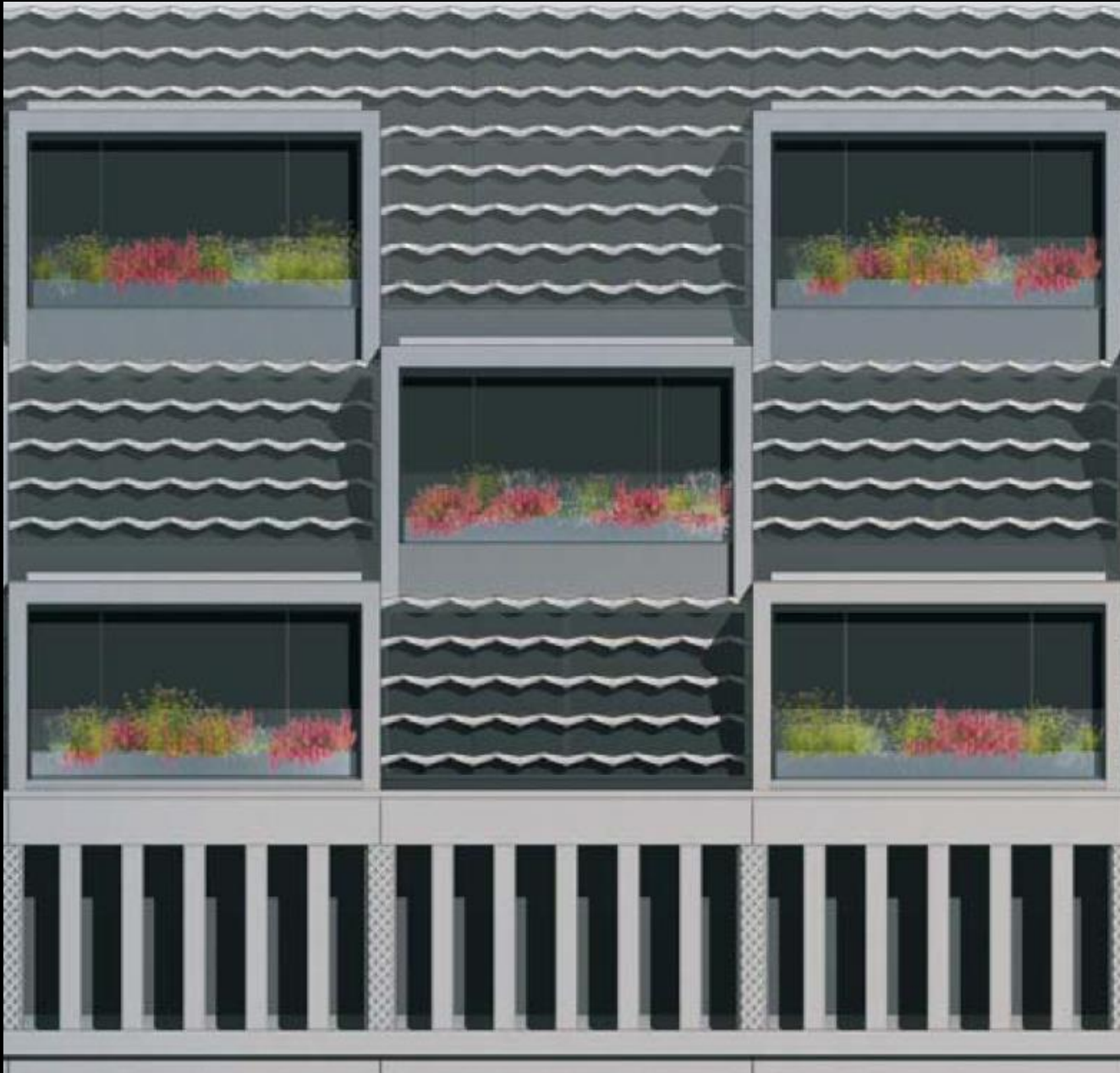
# 1-14 Liverpool Street and 11-12 Blomfield Street



Proposed Vitrine



# 1-14 Liverpool Street and 11-12 Blomfield Street



Dormer terraces & windows



# 1-14 Liverpool Street and 11-12 Blomfield Street



Page 28



Eastern entrance to Finsbury Circus Gardens

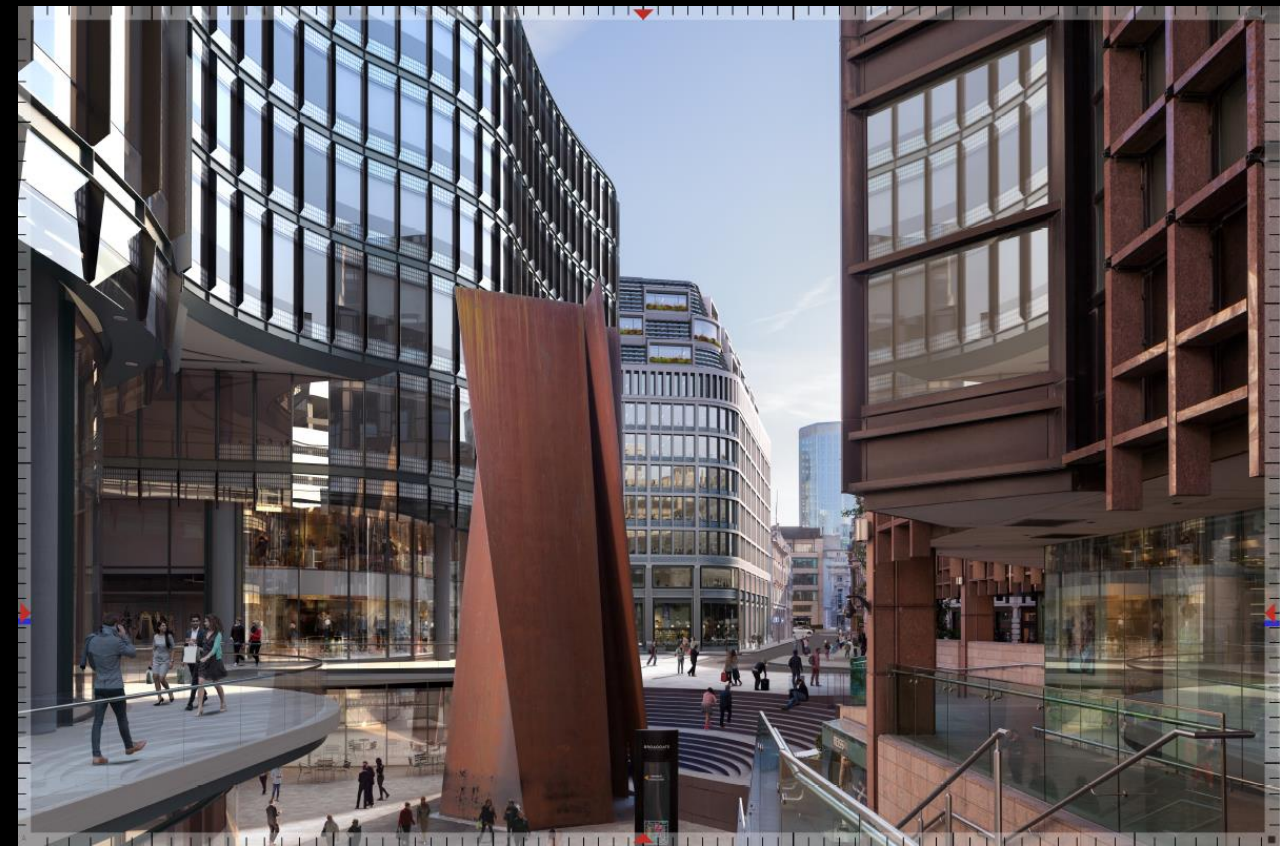
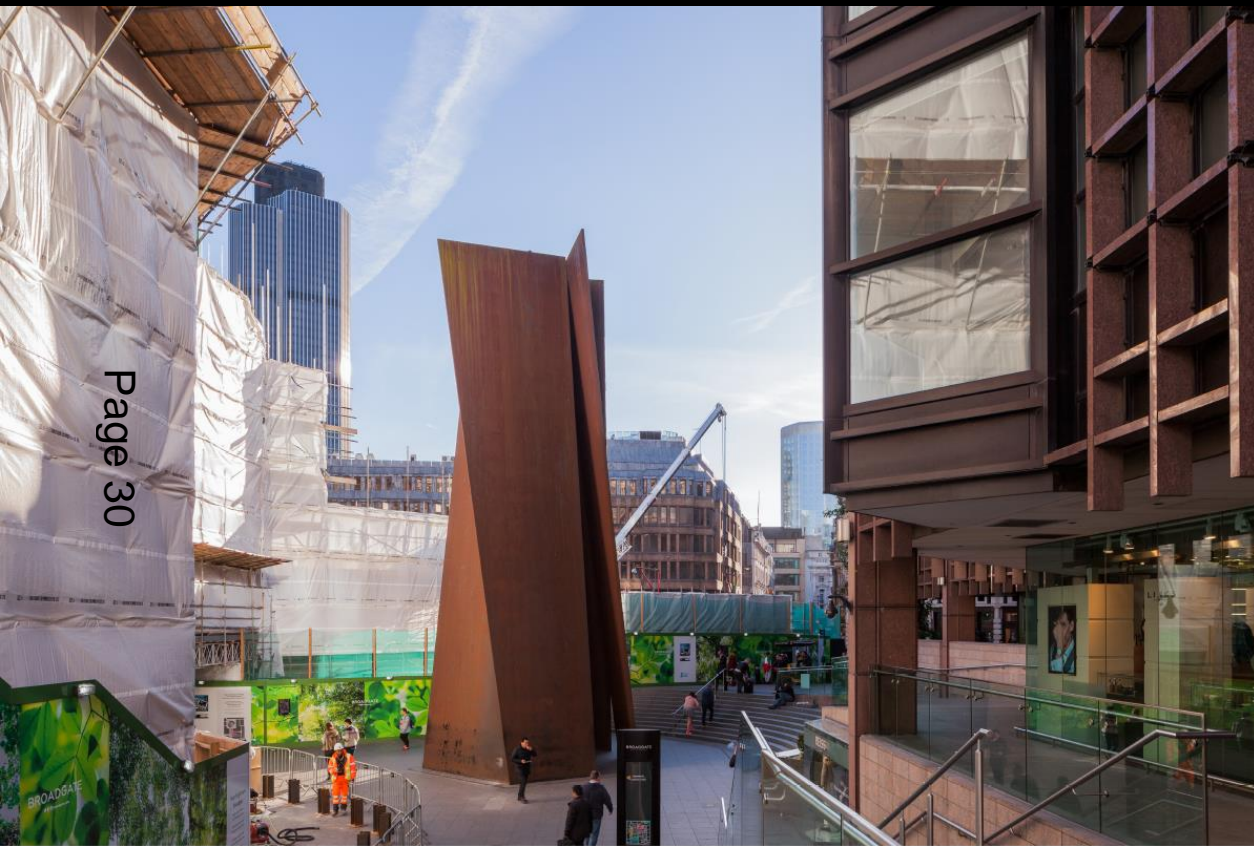


# 1-14 Liverpool Street and 11-12 Blomfield Street



Finsbury Circus east, looking towards Blomfield Street







# 1-14 Liverpool Street and 11-12 Blomfield Street



Liverpool Street, alongside Great Eastern Hotel



## 1-14 Liverpool Street and 11-12 Blomfield Street



## Eldon Street at entrance to Broadgate







# NEXT COMMITTEE

12 December 2019

